
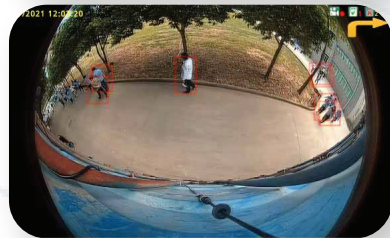


A1. Model No.:		A2. Product Name:	
HD700263DC		7" HD COLOR MONITOR FOR HD 360 USE	
B1. Features:			
(1) HD 7" touch-screen monitor (2) VGA input (3) Full control over DVR by touch operation			
B2. Accessories :			
1- Base support bracket 4- Angle adjustment screws 1- U-support bracket 1- Remote control 1- Sun shield			
B3. Key Specifications:			
LCD size:	7"		
Resolution:	1024 x 3 (RGB) x 600		
Outer dimension	203mm (W) × 112mm (H) × 28mm (T).		
Audio output (loudspeaker)	1W		
VGA input	1		
CVBS input	1		
Contrast:	700:1		
Brightness:	650 cd/m ²		
Viewing angle:	U: 85/ D:85, R/L: 85/85		
Operating temperature:	-20~+70°C, RH 90%		
Split Screen	1/4		
Working Volts	10-32V		
Power Consumption	less than 5W		
C1. PacC1. Packing:king:			
Weight Of Unit Product:	1.60 Kg	Weight Of Export Carton:	17 kg
Dimension Of Unit Product:	203mm (W) × 112mm (H) × 28mm (T)	Dimension Of Export Carton:	
Dimension Of Giftbox:	31.4*19.5*8.8 (cm)	Qty Per Carton:	10 units
D1. Payment Term:		E1. Warranty Terms:	
T/T or L/C at sight		18 months	
F1. Certificates:		G1. Reference Price:	
Remarks:			



Model
BVA17



360° Around View + Pedestrian Detection System

1. 4 pcs 190 ° HD 1080P AI pedestrian detection camera inputs, with horizontal view angle > 170°.
2. Techniques of quad-core ARM Cortex-A53 and SOC development of built-in high-performance H.264 video encoding/decoding engine core make it efficient to composite seamless images with high accuracy.
3. Support 2 pcs 128G SD card as video media.
4. Low-cost calibration tools, simplified calibration procedures.
5. Max 4CH 1080P/30fps or 4CH 1080P/25fps resolution.
6. High definition 1080P video output.
7. Single-step calibration for built-in and peripherals parameters of cameras, no need to bound the cameras and the main unit.

Specifications

Image Processing Unit

Video Input	: Max.4CHx1080P AHO (25/30)FPS
Video Output	: 1-CH 1080P HDMI or AHO/ CVBS(D1) / RTP/ RTSP
TV System	: PAL / NTSC
Trigger Input	: 1-CH backward line trigger, 1-CH turn left trigger, 1-CH turn right trigger, 1-CH reserved trigger
Signal Output	: 1-CH reserved signal output
Viewing Angle	: Horizontal: >190° ; Vertical: >130°
Operating Voltage	: 10-32V
Operating Current	: <2A/12V
Operating Temperature	: -20°C - 70°C
Storage Temperature	: -40°C - 105°C
Operating Humidity	: 10% -95%

Camera

Dimensions	: 103.5 X 53 X 66.5 (mm)
Resolution	: 1920X1080P
Frame Rate	: 25 or 30
Video Output	: AHD(1.0Vp-p, 75Ohm)
Viewing Angle	: 170°
Audio Output	: Warning acoustical signal Output
Communication Interface	: USB 2.0(For external Wi-Fi
Wire Length	: module) 0.5M
Power Supply	: DC 10V-32V
Power Dissipation (12V IN)	: 170mA(IR off)
Waterproof Rating	: IP69K
Operating Temperature	: -20~ + 70°C
Storage temperature	: -40~ + 85°C
Vibration Resistance	: 5.9G